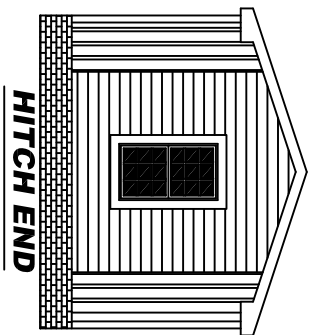
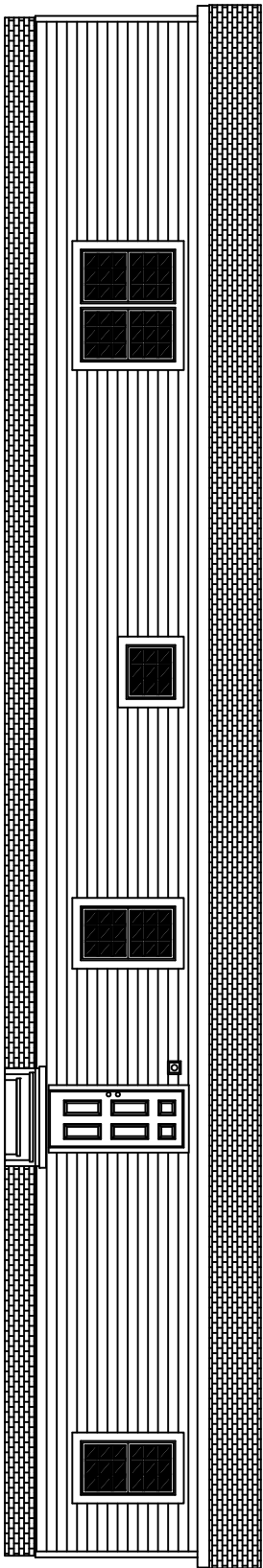
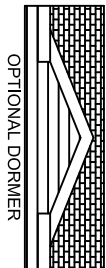
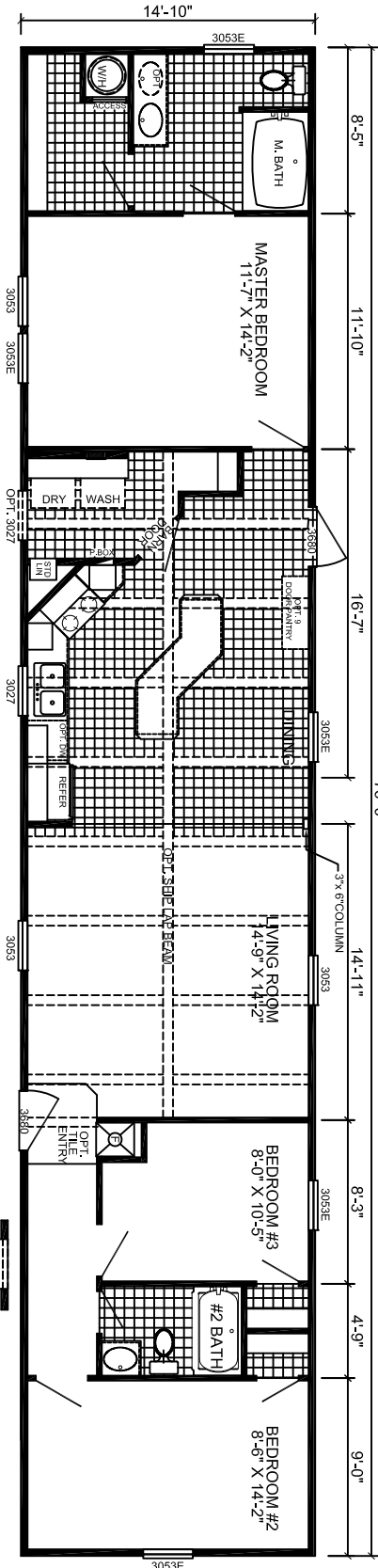


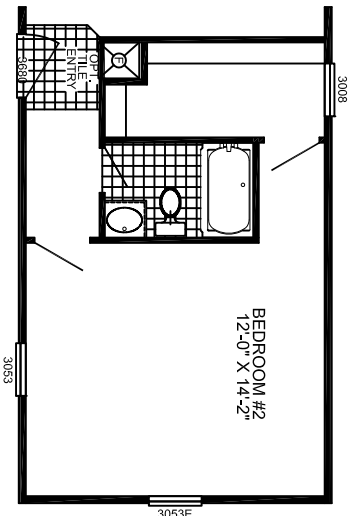
# ACE



**HITCH END**



**OPT. 3053E**



**OPT. 3053E**

**OPT. 2 BEDROOM**

**L-5763H-SVS**  
**3-BEDROOM / 2-BATH**  
**16 X 80 - Approx. 1130 Sq. Ft.**  
 Date: 4-27-2017

- \* All room dimensions include closets and square footage figures are approximate.
- \* Transom windows are available on optional 9'-0\" side wall houses only.
- \* Available with Linolea or Shutters around windows.